

23 Years Euregional Prize for Architecture

EAP 23 EAP
23 EAP 23 E
AP 23 EAP 2
EAP 23 EAP
23 EAP 23 E
AP 23 EAP 2

Interlinie - Re:meat

Participant info

Name: Franky Larousselle
Institute: PHL Hasselt

Project info

The origin of our meat doesn't seem to interest us any longer. Meat production companies are meaninglessly kept from society in industrial patchworks. Once inside these companies, where I had the chance of working through several months, there is a mini-universe of local workers taking care of craft processes. On a small scale, without being pretentious.

There's a big risk in over-dimensioning. In Asia, our consumption based society is starting to feel its own limits. Anti-social and anti-sensorial working conditions are shaping the future of a capitalistic mania. Think about the illustrations of Edward Burtynsky. Trying to integrate these activities back in an urban environment, means merging architecture and social issues in a contemporary society. Moral distance between food and man needs to be reduced.

The site 'cattle' in Sint-Truiden, once a place of vegetable gardens and livestock fair, is characterized by a garden wall, a human intervention, which serves as a physical boundary. A duplication of the garden wall creates a mini-universe as an inbetween. An occasional break in these walls allows spaces to communicate.

A meat processing company lies in this mini-universe, enclosed by public facilities, including corporate eating facilities and a research center. The autonomous character fades as wall openings appear. The reorganization of the production is grafted onto six paternosterlifts that are used for meat maturing in refrigerators. A minor intervention that reduces land use and avoids sisyphian tasks for local workers. It physically links meat through condensed windows.

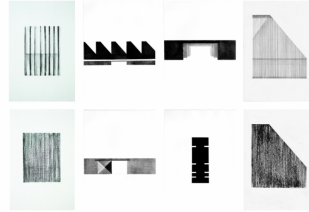
Eleven caps, by analogy 'smoked' to shou-sugi-ban, form an archetypal image above the garden wall.

A new sobriety.

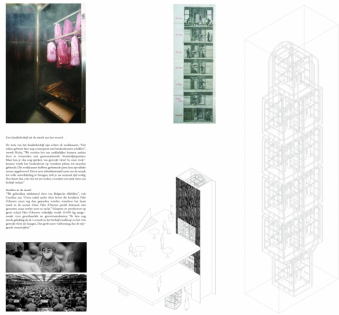
Scaling is the first form of contemplation. Architecture needs a new sobriety. Distillation of beauty and emotion of what has already been given. The basic drawings are therefore the starting point of a spatial and sensorial quest of memories.



Site Plan



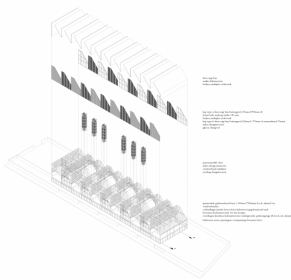
Architectural Drawings



Architectural Drawings



Architectural Drawings



Architectural Drawings

