

25 Years Euregional Prize for Architecture

EAP 25 EAP
25 EAP 25 E
AP 25 EAP 2
5 EAP 25 EA
P 25 EAP 25
EAP 25 EAP

From the City to the School

Participant info

Name: Adrien Maerschallck
Institute: ULg Liège

Project info

From the City to the School

Faced with the constant population growth, the city of Saive has invested in the military barracks site abandoned since 2011 and asked us to think the city development with the creation of a new "urban center".

The masterplan was designed as a sustainable and evolutionary project. The aim was to bring life back between the barracks, which were highly enclosed, and the city. Thus, it was chosen to develop first the main axis between the two squares along Haute Saive Street to meet initial objectives. Furthermore, it doesn't consume whole site immediately and it leaves building lands to respond to current and future needs.

Knowing that the existing primary school has to move to the new site, it was chosen to design the new one in the city heart. A symbolic commitment which aims to see education as a key issue of urban development.

The whole site was thought as an architectural promenade which offers different public spaces to users rather than to cars, all accessible by disabled people. A way to bring life back and to create encounter spaces for the city. But the height difference between the barracks and the street was the main constraint. Therefore, all functions needing huge space like the sports hall, the refectory... were gathered to build a "structural wall", creating different outdoor spaces and bringing light back.

The school architecture is oriented on the porosity between masses and voids where living and sharing spaces are created. Even if the building provides a feeling of enclosure to ensure children's safety and life centered on recreational areas, different connections are created with outside. The notion of framing and openness is dominant.

The project focus on improving learning by different activity and encounter spaces and try to bring happiness back at school.

A new center for the city of Sava

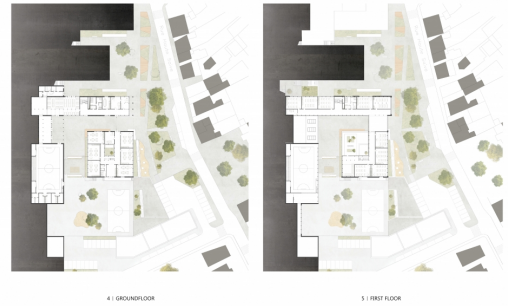
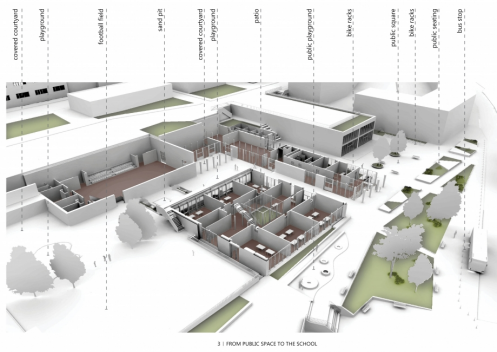
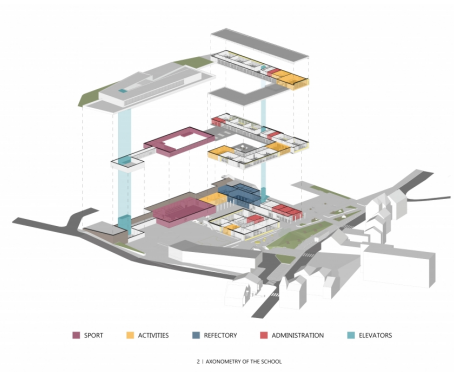
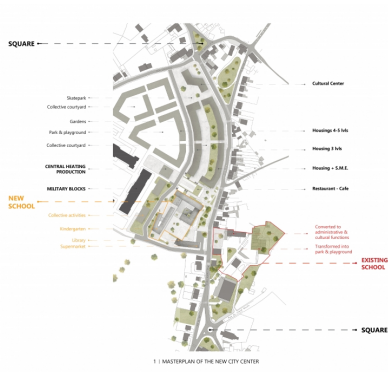
The military barracks site of Sava was bought in 2011 by the city of Sava. The site was in a very poor condition and the city saw it as a chance to develop a new city center for Sava.

The city saw the opportunity of creating the center as a long public space, between the existing square, from the public space, different roads into the old military site being such connection with the city.

A new school for Sava

Knowing that the existing primary school had to move to the new site, the school director asked us to think about a new project for Sava.

It was chosen to design the new one in the city heart, a central corner, more which will be seen as a new way of urban development.



On the school path

The school path is a key element of the design. It is a path that leads from the public space to the school building. It is a path that is designed to be safe and easy to use. It is a path that is designed to be a place where children can play and learn.

Space appropriation

The school building is designed to be a place where children can play and learn. It is a place that is designed to be a place where children can play and learn. It is a place that is designed to be a place where children can play and learn.

A school for all

The school building is designed to be a place where children can play and learn. It is a place that is designed to be a place where children can play and learn. It is a place that is designed to be a place where children can play and learn.

Create with fun

The school building is designed to be a place where children can play and learn. It is a place that is designed to be a place where children can play and learn. It is a place that is designed to be a place where children can play and learn.

The child's appetite

The school building is designed to be a place where children can play and learn. It is a place that is designed to be a place where children can play and learn. It is a place that is designed to be a place where children can play and learn.

Mini-sportmen

The school building is designed to be a place where children can play and learn. It is a place that is designed to be a place where children can play and learn. It is a place that is designed to be a place where children can play and learn.

