

EAP27EAP  
27EAP27E  
AP27EAP2  
7EAP27EA  
P27EAP27  
EAP27EAP

# Vertical Village

## Participant info

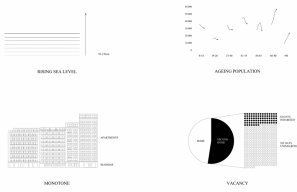
**Name:** Ianthe Lindelauf  
**Institute:** UHasselt

## Project info

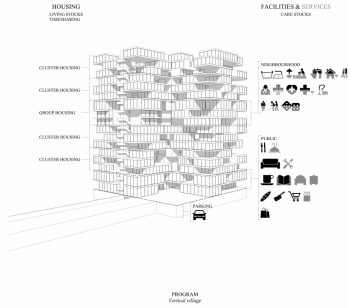
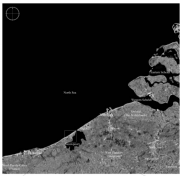
Rising Sea level. Ageing Population. Monotone Blocks. Vacancy.  
Challenges to the Belgian coastline  
or opportunities for innovation?

Coastal cities can't stop the rising sea level. Instead of building constructions to keep blocking the sea, the surplus of seawater should be integrated into the landscape. The creation of a controllable tidal basin, which can be flooded during high tide and can drain during low tide, is an opportunity to create a new natural barrier between land and sea. This new landscape in Nieuwpoort, Belgium, offers the perfect location for the development of a new construction, a vertical village.

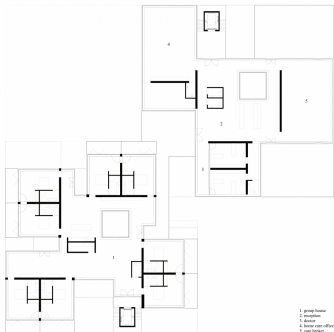
The vertical village can be seen as an experiment to find possible answers to the challenges facing the Belgian coast. In this new type of living, small-scaled care will be integrated in the urban and social environment. This in contrast to the existing large-scale care facilities, each having their own function, which are factories of care withdrawn from the community. Living becomes more flexible in this vertical village because of the concept of living stocks and timesharing. Due to a wide variety of residential typologies and local facilities, which are intensified by an appropriate service for the neighbourhood, people can live independent at home as long as possible. When, for some reason, someone isn't able to continue to live at home, he/she can move within the same living environment to a group accommodation that feels like a second home. Here, tailored care is permanently provided.



CHALLENGES  
Central area highway



LEVEL 6  
Cluster housing



LEVEL 8  
Group housing of community house

